

Connecting to Incorporator.co.uk

If you are experiencing difficulties connecting to the latest version of Incorporator please follow the instructions as set out below. **You may need to refer to your IT support for assistance**

Our new site is much more secure and your Internet Explorer settings could be prohibiting you from accessing the application. In the first instance please upgrade to Internet Explorer 6, if this does not resolve the problem or if an upgrade is not possible please follow the instructions within this document.

We recommend that you use the latest Service Pack for Windows and Internet Explorer. It is essential that you identify the **Operating System** on your computer and subsequently follow the appropriate instructions.

Find Out Which Operating System Your Computer Is Using

There are many versions of the Microsoft Windows operating system. You may be using Windows 98, Windows 2000, Windows XP, or another version. To make sure you know which version is on your computer:

1. Click **Start**, and then click **Run**
2. In the box, type **winver**, and then click **OK**

The window that appears will show you which version of Windows your computer is using .If you are using Windows XP with Service Pack 2 (SP2), you will see the service pack listed as shown by the highlighted area in the following image:



Note: These instructions do not apply to Apple Macintosh computers.

Setting your Internet Explorer Settings for Windows XP, Internet Explorer 6

Windows XP Service Pack 2 (SP2)

The latest Service Pack for Windows XP—Service Pack 2 (SP2)—is all about security, it provides better protection against viruses, hackers, and worms, and includes Windows Firewall, Pop-up Blocker for Internet Explorer..

1. In **Internet Explorer**, on the **Tools** menu, click **Internet Options**.
2. Click the **Advanced** tab and ensure that your settings reflect those illustrated within **Figure 1** If you make changes click **Apply** to accept. Please reboot your computer to take advantage of these changes.

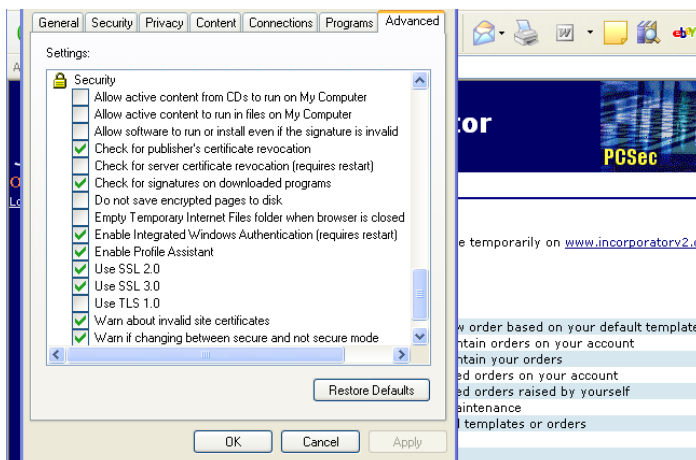


Figure 1

Setting your Internet Explorer Settings for Windows 2000, Internet Explorer 6

1. In **Internet Explorer**, on the **Tools** menu, click **Internet Options**.
2. Click the **Advanced** tab and ensure that your settings reflect those illustrated within **Figure 2** If you make changes click **Apply** to accept
Please reboot your computer to take advantage of these changes.

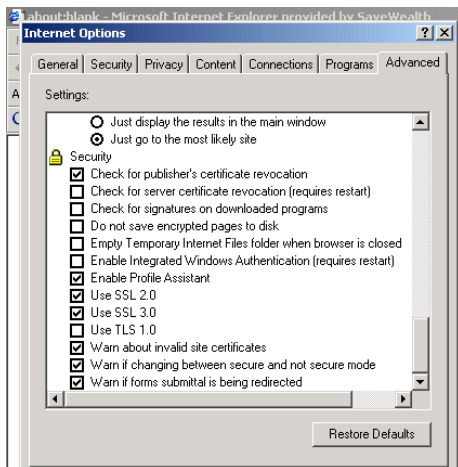


Figure 2

Setting your Internet Explorer Settings for Windows 98 Internet Explorer version 6

1. In **Internet Explorer**, on the **Tools** menu, click **Internet Options**.
2. Click the **Advanced** tab and ensure that your settings reflect those illustrated within **Figure 3** If you make changes click **Apply** to accept.
Please reboot your computer to take advantage of these changes.

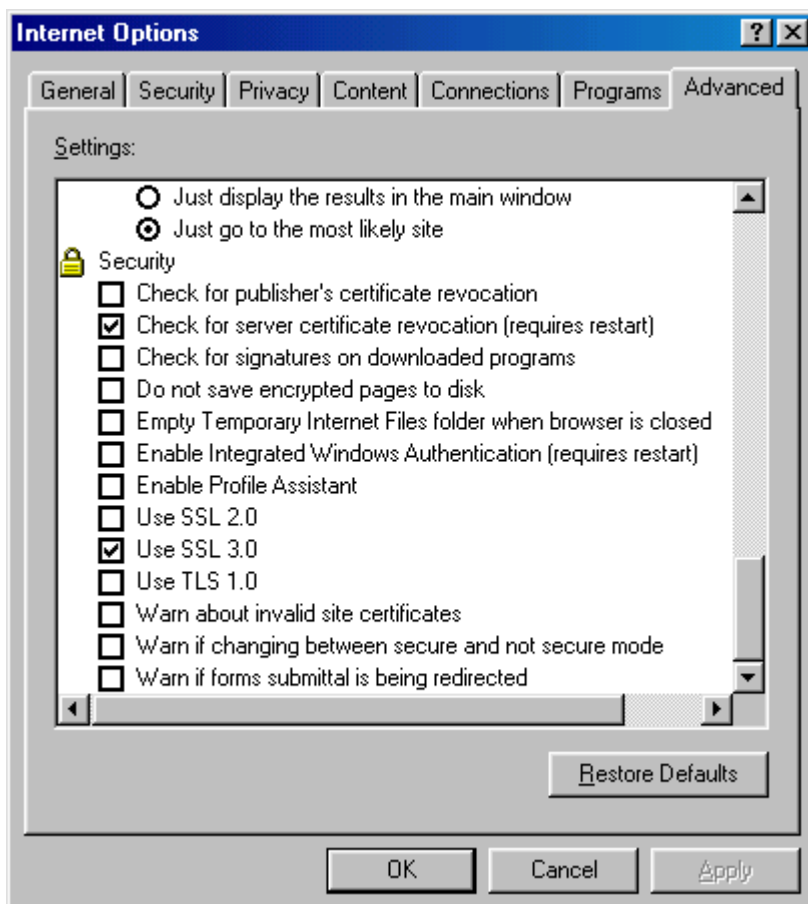


Figure 3

Setting your Internet Explorer Settings for Windows 98 Internet Explorer version 5

1. In **Internet Explorer**, on the **Tools** menu, click **Internet Options**.
2. Click the **Advanced** tab and ensure that your settings reflect those illustrated within **Figure 4** If you make changes **click Apply** to accept.
Please reboot your computer to take advantage of these changes.

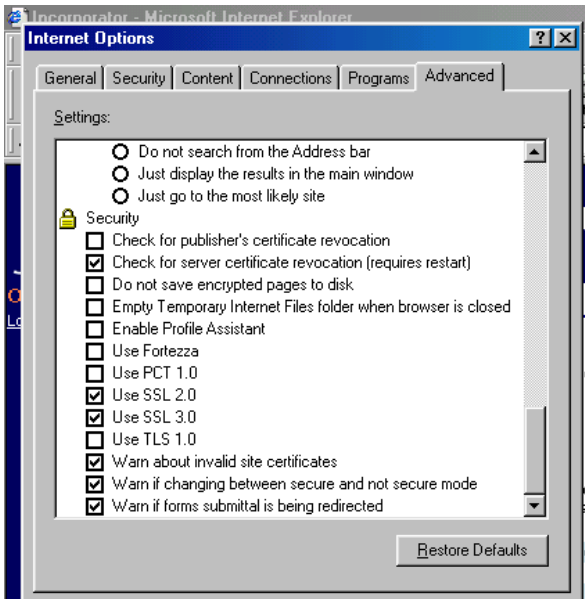


Figure 4

You may wish to access the Microsoft support site for further information on this subject.

<http://support.microsoft.com/?kbid=241344>

Should you require any further information or assistance please contact the helpline on 0117 929 3777.